

EcoPlus and EcoSlim Drawings and Charts (24PS HLG)

Wiring Diagrams:

EL001199 - Without Dimmer

EL001200 - With Dimmer

EL001201 - Lutron Diva Dimmer with Multiple Power Systems

EL001202 - Lutron Lyneo Dimmer with Multiple Power Systems

For:

EP22 Series = EP22, EP22M, EP22G

EP24 Series = EP24, EP24M, EP24G

EP26 Series = EP26, EP26M, EP26G

EP34 Series = EP34, EP34M, EP34G

EP33 Series = EP33, EP33M, EP33G

EP36 Series = EP36, EP36M, EP36G

EP44 Series = EP44, EP44M, EP44G

EP46 Series = EP46, EP46M, EP46G

ES22 Series = ES22, ES22M, ES22G

ES24 Series = ES24, ES24M, ES24G

ES26 Series = ES26, ES26M, ES26G

ES33 Series = ES33, ES33M, ES33G

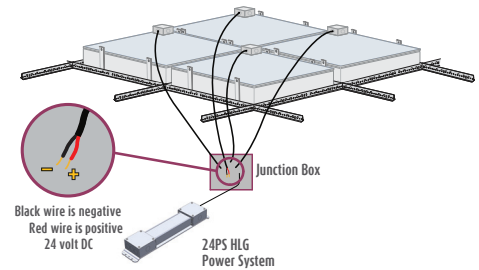
ES34 Series = ES34, ES34M, ES34G

ES36 Series = ES36, ES36M, ES36G

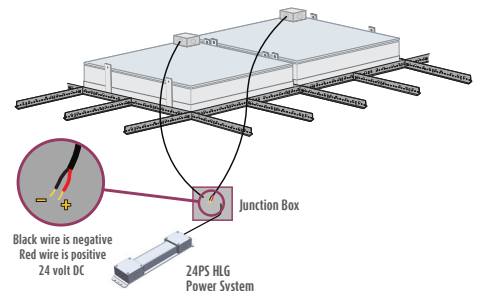
ES44 Series = ES44, ES44M, ES44G

Sky Factory 24PS HLG Power System Dimensions and Weights

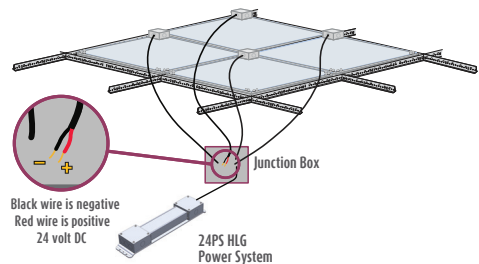
Wire Sizing Chart



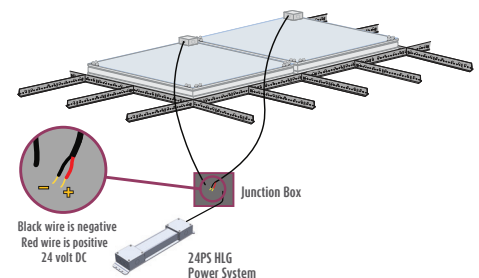
EcoPlus – EP22 & 24 Series



EcoPlus – EP26,33,34,36,44 & 46 Series



EcoSlim – ES22 & 24 Series



EcoSlim – ES26,33,34,36 & 44 Series

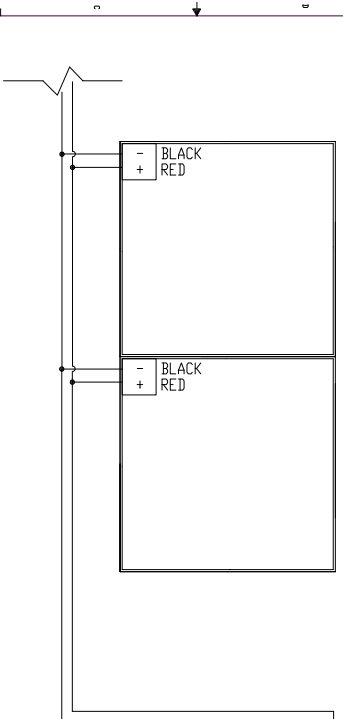
For technical support at any time during the installation, please call us **toll free at 866-759-3228**.

We want your installation to go as smoothly as possible. Thank you for choosing The Sky Factory.

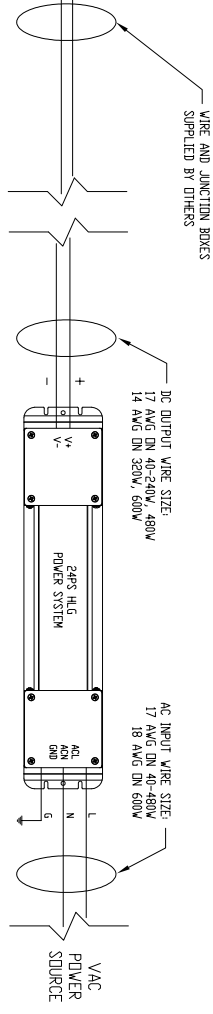
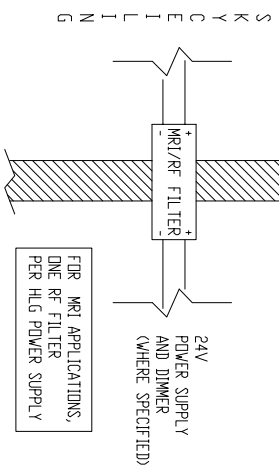
EP AND ES SERIES FIXTURES
WITH 24PS HLG POWER SYSTEM
NON-DIMMING OPTION

ECOPUS
EP22 SERIES, EP24 SERIES,
EP26 SERIES, EP33 SERIES,
EP34 SERIES, EP36 SERIES,
EP44 SERIES, EP46 SERIES

ECSULM
ES22 SERIES, ES24 SERIES,
ES26 SERIES, ES33 SERIES,
ES34 SERIES, ES36 SERIES,
ES44 SERIES



- NOTES:
1. ALL FIXTURES 24V DC \equiv ONLY
 2. JUNCTION BOX ATTACHED TO EACH FIXTURE;
WIRE SIZE 18 AWG STRANDED
- WIRE COLORS:
RED (+) POSITIVE
BLACK (-) NEGATIVE
3. SEE ALSO WIRE SIZING CHART.



FOR MRI APPLICATIONS,
ONE RF FILTER
PER HLG POWER SUPPLY

Sky Factory
MANUFACTURER AND DISTRIBUTOR

24PS HLG POWER SYSTEM
ELECTRICAL WIRING DIAGRAM

DATE: 12/24/2018
DRAWN BY: EGA
CHECKED BY: J. WILSON

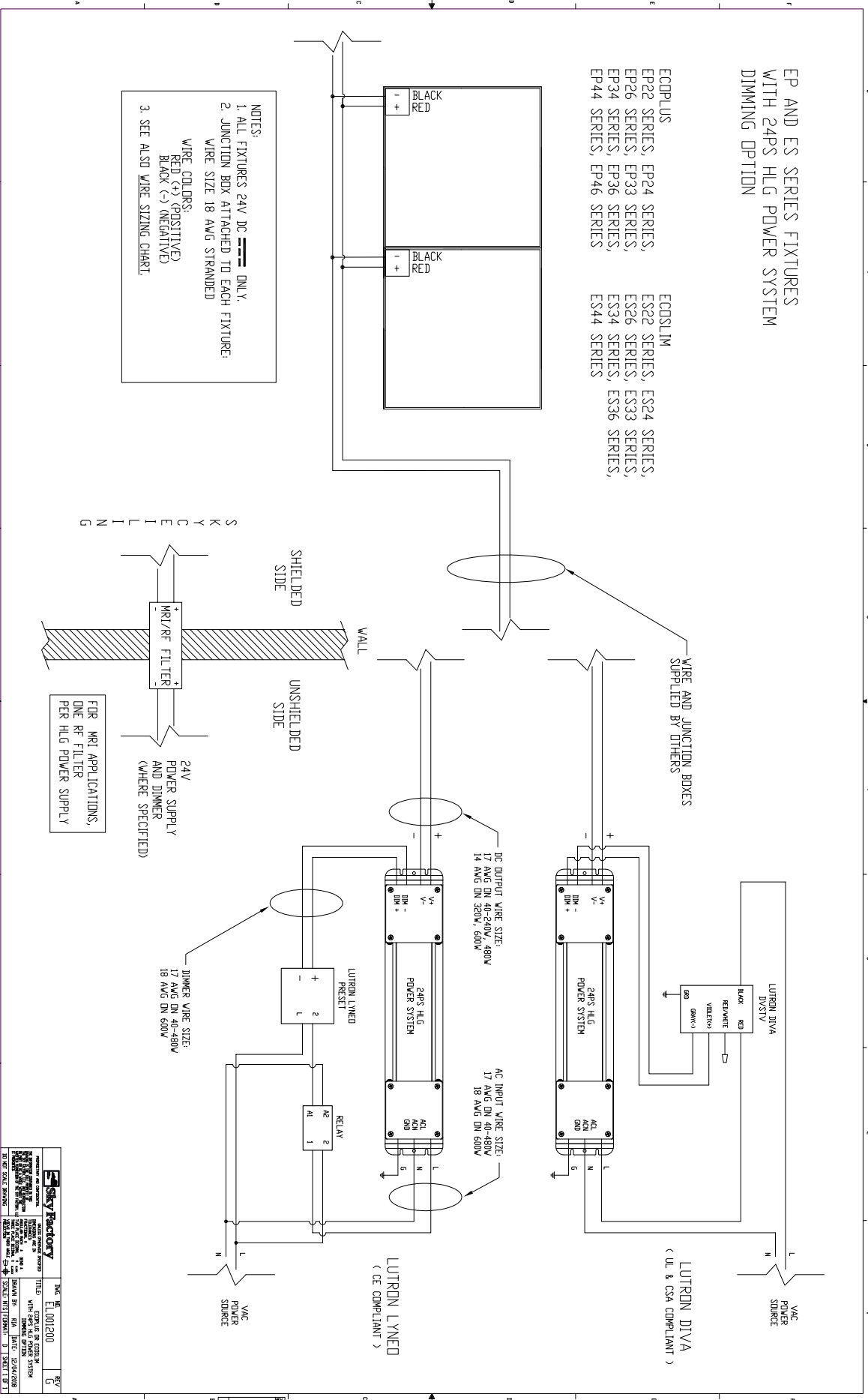
PROJECT: WESTERN - B1 SHEET 1 OF 1

DOC. NO. E0001199
REV. 5

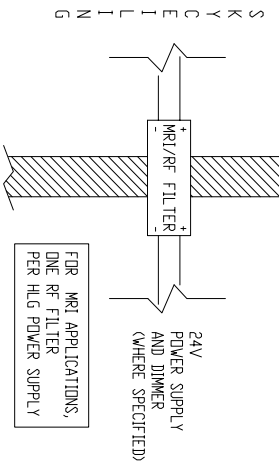
EP AND ES SERIES FIXTURES
WITH 24PS HLG POWER SYSTEM
DIMMING OPTION

ECODPLUS
EP22 SERIES, EP24 SERIES,
EP26 SERIES, EP33 SERIES,
EP34 SERIES, EP36 SERIES,
EP44 SERIES, EP46 SERIES

ECOSLIM
ES22 SERIES, ES24 SERIES,
ES26 SERIES, ES33 SERIES,
ES34 SERIES, ES36 SERIES,
ES44 SERIES



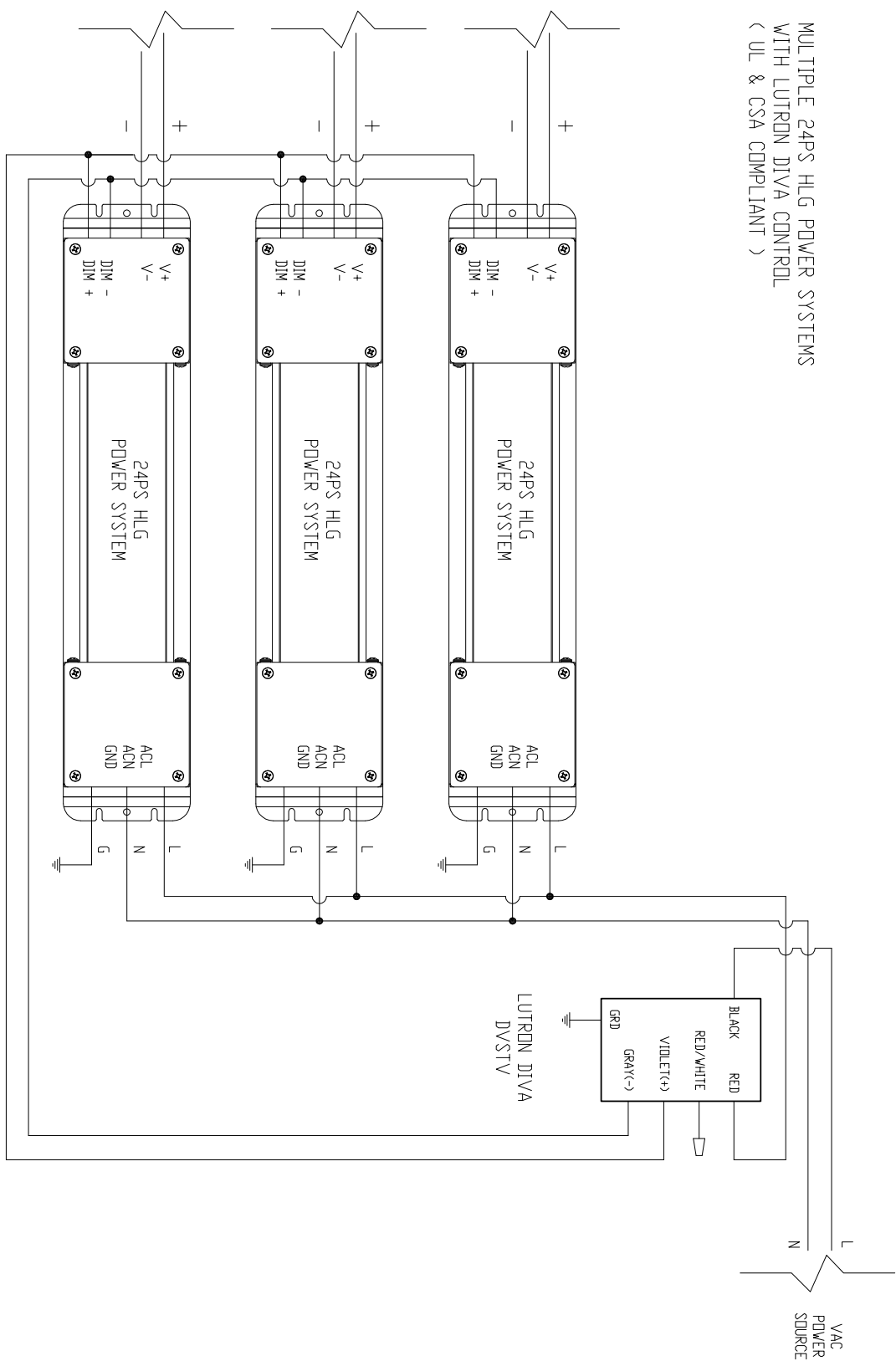
- NOTES:
1. ALL FIXTURES 24V DC ONLY.
2. JUNCTION BOX ATTACHED TO EACH FIXTURE;
WIRE SIZE 18 AWG STRANDED
- WIRE COLORS:
RED (+) (POSITIVE)
BLACK (-) (NEGATIVE)
3. SEE ALSO WIRE SIZING CHART.



<p>Sky Factory 11000 15th St NE Redmond, WA 98073 (206) 881-7777 www.skyfactory.com</p>	<p>DATE: 01/20/20 TITLE: EP & ES HLG WITH DIMMING OPTION DRAWN BY: SKA CHECKED BY: SKA SCALE: AS SHOWN</p>	<p>DATE: 01/20/20 TITLE: EP & ES HLG WITH DIMMING OPTION DRAWN BY: SKA CHECKED BY: SKA SCALE: AS SHOWN</p>	<p>DATE: 01/20/20 TITLE: EP & ES HLG WITH DIMMING OPTION DRAWN BY: SKA CHECKED BY: SKA SCALE: AS SHOWN</p>
--	--	--	--

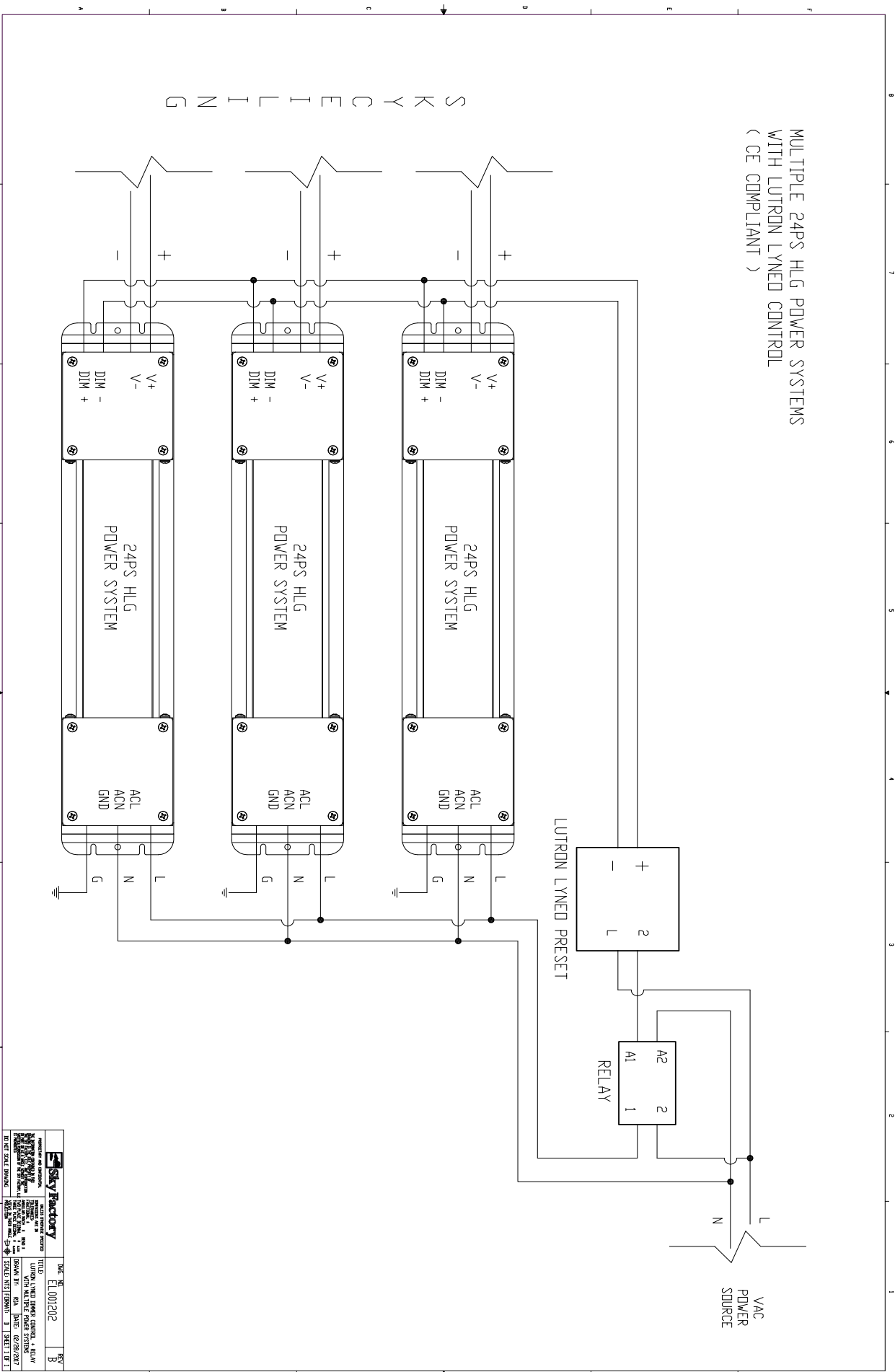
S K Y C E I L I N G

MULTIPLE 24PS HLG POWER SYSTEMS
WITH LUTRON DIVA CONTROL
(UL & CSA COMPLIANT)



	DWG. NO.	EL001201	SHEET	3
REGISTERED ELECTRICAL ENGINEER	TITLE: LUTRON DIVA DIMMER CONTROL WITH MULTIPLE POWER SYSTEMS			
NO. 1017 12000 2010 12000 2010	DATE: 06/28/2017	SCALE: 1/8"=1'-0"	SHEET 3 OF 3	

MULTIPLE 24PS HLG POWER SYSTEMS
 WITH LUTRON LYNEO CONTROL
 (CE COMPLIANT)



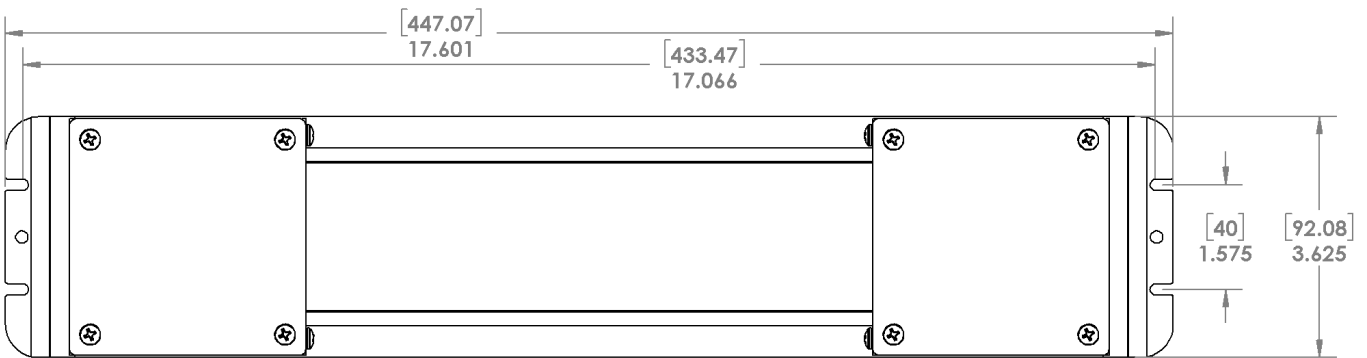
S K Y C E I L I N G

	SKY FACTORY 1000 W. 10th Street Phoenix, AZ 85001 Tel: 602.998.8888 Fax: 602.998.8889 Email: info@skyfactory.com	SKY FACTORY 1000 W. 10th Street Phoenix, AZ 85001 Tel: 602.998.8888 Fax: 602.998.8889 Email: info@skyfactory.com
	TITLE: LUTRON LYNEO DIMMER CONTROL & RELAY DRAWN BY: SKY DATE: 02/28/2017 SCALE: NTS (FRONT) 1" = 1" SHEET 1 OF 1	SKY E.L.001202 B

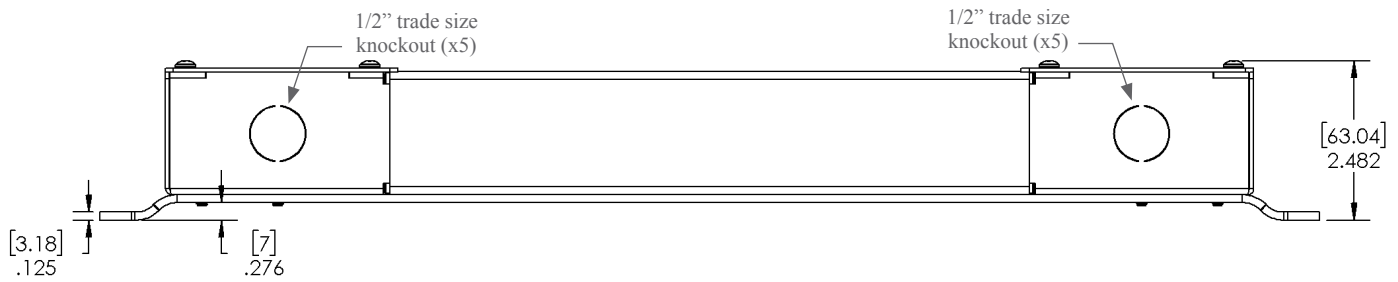
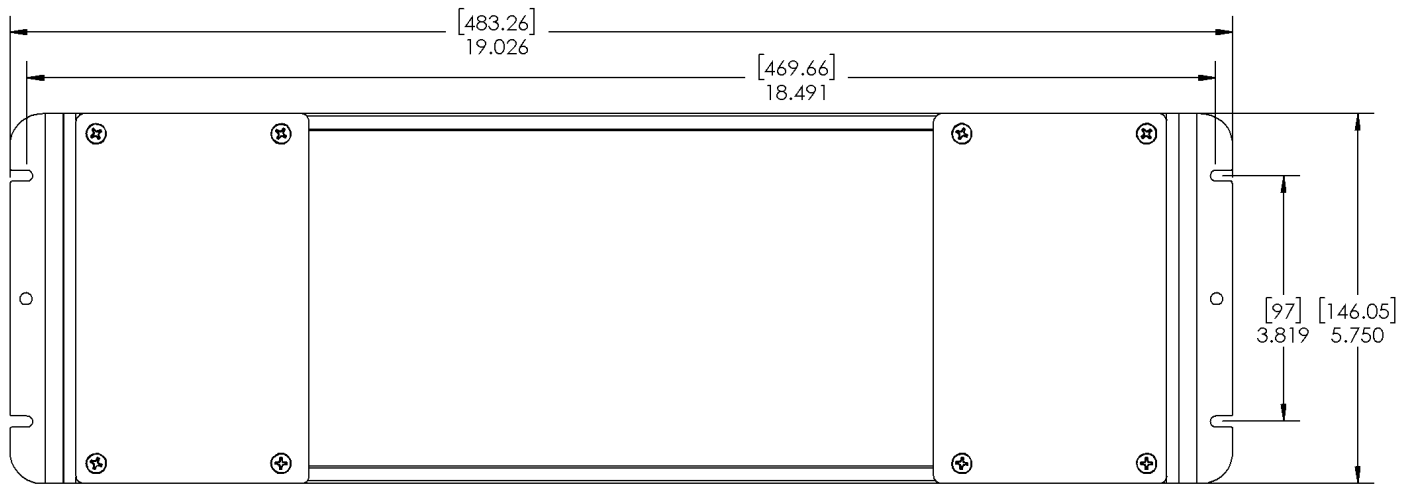
Sky Factory 24PS HLG Power System Dimensions and Weights:

DIMENSIONS AND WEIGHTS				
	LENGTH	WIDTH	HEIGHT	WEIGHT
40 WATT 60 WATT	18 IN	3.7 IN	2.4 IN	3 LBS
	45.8 CM	9.4 CM	6.1 CM	1.4 KG
80 WATT 100 WATT 120 WATT 150 WATT 185 WATT 240 WATT	18 IN	3.7 IN	2.4 IN	4 LBS
	45.8 CM	9.4 CM	6.1 CM	1.8 KG
320 WATT	18 IN	3.7 IN	2.4 IN	6 LBS
	45.8 CM	9.4 CM	6.1 CM	2.7 KG
480 WATT	19.1 IN	5.8 IN	2.5 IN	8 LBS
	48.5 CM	14.8 CM	6.4 CM	3.6KG
600 WATT	19.1 IN	5.8 IN	2.5 IN	10 LBS
	48.5 CM	14.8 CM	6.4 CM	4.6 KG

Mounting dimensions: 40W, 60W, 80W, 100W, 120W, 150W, 185W, 240W, 320W 24PS HLG Power Systems



Mounting dimensions: 480W, 600W 24PS HLG Power System



Wire Sizing Chart

This chart is a guideline for recommended wiring practice.

Applies to 24V DC power only, i.e. from “fixture to power system.”

Not meant for “V AC to power system” nor “dimmer to power system.”

Wire sizes in AWG Conversion chart below.

Distance: Feet (Meters)	AWG for 5A	AWG for 10A	AWG for 15A
20 (6)	18	14	12
30 (9)	16	12	10
40 (12)	14	10	10
50 (15)	12	10	*
60 (18)	12	10	*
80 (24)	10	*	*
100 (30)	10	*	*

* Terminal block wire range #10 - #22 Awg.

AWG	MM
10	6.271
11	5.156
12	3.302
13	2.629
14	2.088
15	1.652
16	1.308
17	1.039
18	0.823